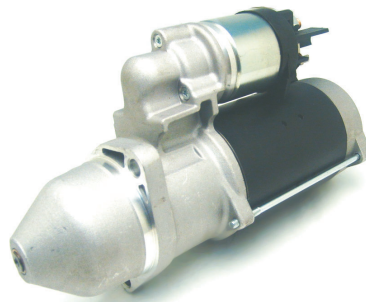


LEA0762
28V / 100A

Used On: Renault Truck Premium & Midlum D 2006->>
Volvo FE 300-26, 320-18, 320-26, 340-18, 340-26 2012->>
Replaces: Mitsubishi A4TA8191
Volvo 20707050
Renault 5010589137



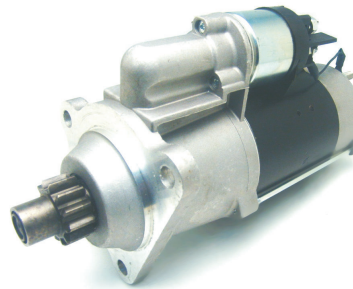
LES0380
12V / 3.0kW

CW / 9 Theeth
Used on: JCB Agricultural Machines & KHD Industrials
Various Applications
Replaces: Bosch 0-001-230-013
KHD 1181570, 1182179, 1182388



LES0381
12V / 2.2kW

CW / 9 Theeth
Used on: John Deere 4000 4520, 4720 Series 2009->>
Replaces: Bosch 0-001-109-330, -331
John Deere RE508922, RE540304, SE501844



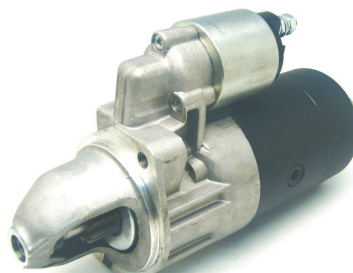
LES0384
24V / 6.0kW

CW / 12 Theeth
Used on: Volvo Various Applications
Replaces: Bosch 0-001-330-007
Volvo 874468



LES0385
24V / 6.2kW

CW / 11 Theeth
Used On: DAF CF85 XE 250, -280, 12.6L Dsl 1999-2002
DAF CF85 XE280, -315, -355, 12.6L Dsl 2001-2007
Replaces: Bosch 0-001-372-008
DAF 1357212



LES0389
24V / 2.5kW

CW / 10 Theeth
Used on: Mercedes-Benz G series 250 GD 1987-1992
Mercedes-Benz Unimog U90 & U100L 1992->>
Replaces: Bosch 0-001-219-009, -007, -001, -016, 017
Mercedes-Benz 003-151-93-01, -94-01, 004-151-31-01

All non - Lucas Elektrik A.Ş. numbers and names are for reference only.

For further inquiries: e-mail:marketing@lucaselektrik.com Fax:+90 264 276 8771

www.lucaselektrik.com