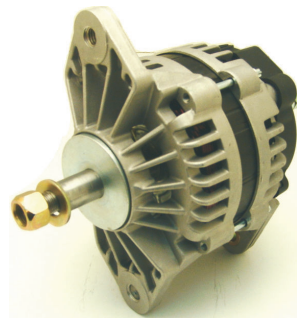


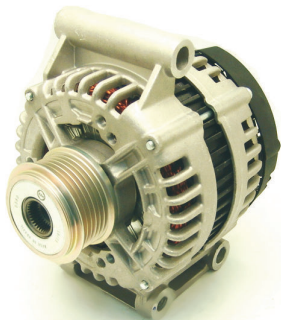
LEA0761
14V / 110A

Used on: Subaru Forester (SG) 2.0X, 2.5 XT AWD 2005->>
Subaru Impreza (GD), (GG) 2.0 WRX Turbo AWD 2002->>
Subaru Impreza (GD), (GG) 1.5 AWD 2006->>
Subaru Legacy IV (BL, BP) 2.0 R, 2.5i AWD 2007->>
Subaru Outback (BL, BP) 2.5 AWD 2003-2009
Replaces: Mitsubishi A003TG4291
Subaru 23700-AA520, -521, -570



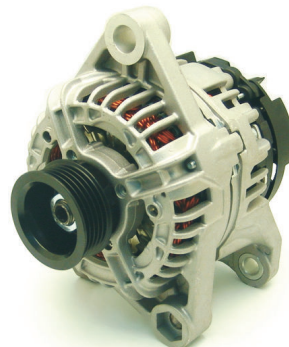
LEA0763
28V / 70A

Used on: JCB 434S & 436E 2007->>
Replaces: Delco Remy 8600017, -020, -154
8600360, -407, -504 & 8700019
Cummins 3972735, 4936879



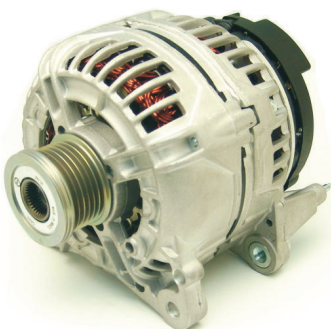
LEA0767
14V / 150A

Used on: Citroen Jumper 2.2 HDi 2006->>
Fiat Ducato JTD 2006->>
Ford Tourneo Connect 2.2 TDCi 2006->>
Ford Transit 2.2 TDCi 2006-2011
Peugeot Boxer 2.2 HDi 2006->>
Replaces: Bosch 0-121-615-002
Fiat 965814468 & 965991808
Ford 1712779, 1747021, 1404791, 1572736
PSA 5705EA



LEA0768
14V / 110A

Used On: Alfa Romeo 2.0 2001-2010
Fiat Brava, Palio Weekend 1.6 1996-2001
Fiat Doblo, Cargo MPV 1.6 2001->>
Fiat Marea 1.6 1996-2002
Fiat Stilo 1.6 2001-2006
Fiat Palio 1.6 1996->>
Replaces: Bosch 0-124-325-059, -146
Fiat 45613063, 46432413, 46532669, 46841966



LEA0769
14V / 140A

Used on: Audi A1 TFSI & A3 1.2 TSI 2012->>
Audi A3 1.2 TFSI & TSI 2010-2013
Replaces: Bosch 0-124-525-201, -545
VAG 03F9030223D, -DX & 03F903023F, -FX



LES0382
12V / 3.1kW

CW / 11 Theeth
Used on: Case Various Applications
Replaces: Bosch 0-001-369-018
Case 138207A1

All non - Lucas Elektrik A.Ş. numbers and names are for reference only.

For further inquiries: e-mail:marketing@lucaselektrik.com Fax:+90 264 276 8771

www.lucaselektrik.com



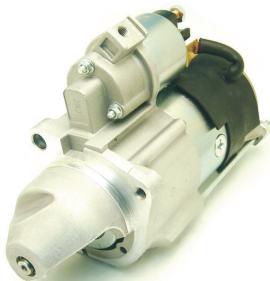
LES0392
12V / 3.2kW

CW / 10 Theeth
Used on: Massey Ferguson MF3680 1998->>
Massey Ferguson MF6270, 6280, 6290 1999-2000
Massey Ferguson MF8270 1999->>
Replaces: Iskra 11.131.780 & AZE4172
Massey Ferguson 3784889M2, 3784890M1, 3823621M91



LES0393
12V / 3.2kW

CW / 10 Theeth
Used on: Massey Ferguson MF290 1979-1986
Massey Ferguson MF3425 & MF3435
Replaces: Iskra 11.131.781 & AZE4173
Massey Ferguson 3821818M91
Perkins 2873K624, -625



LES0400
12V / 2.6kW

CW / 9 Theeth
Used on: Citroen Jumper 230P, 230L, 230 2000-2002
Fiat Ducato 2.5D, 2.5TDi 1994-2002
Fiat Ducato 2.8JTD 2000-2002
Replaces: Magneti Marelli 63114014
PSA 5802Y9 & 580SZ1
Fiat 1319555080, 1331329080, 46208436, 46231646



LES0401
24V / 4.0kW

CW / 9 Theeth
Used on: Fiat Truck 110 6.9L 1978-1981
Fiat Truck 129 8.1L & 60 4.6L 1979-1982
Iveco Euro Cargo 170E, 180E 18 1994->>
Iveco Euro Cargo 75E 15, 75E 15P, 80E 15 1991-2000
Replaces: Bosch 0-001-368-020 & 0-001-231-011
Fiat 4706008, 4716062, 4737756, 4755111, 77050262
Iveco 1368020 & 4755111



LES0402
12V / 3.4kW

CW / 10 Theeth
Used on: John Deere 310B, 4039D, 310C, 310D 1987-1992
John Deere 315SE 4045T, 315SG, 4045T 1995-2001
Replaces: Iskra 11.131.374 & AZF4596
John Deere RE505670 & RE505745
RE507670, SE501851



LES0399
12V / 1.8kW

CW / 11 Theeth
Used on: BMW 318D 2001-2003
BMW 320D 1998-2001
BMW 318D 2002-2005
BMW 320D 2000-2001
BMW 520D 2000-2003
Replaces: Magneti Marelli 63113001 & 63193001
BMW 12-41-2-247-063, 12-41-2-249-295

All non - Lucas Elektrik A.Ş. numbers and names are for reference only.

For further inquiries: e-mail:marketing@lucaselektrik.com Fax:+90 264 276 8771

www.lucaselektrik.com